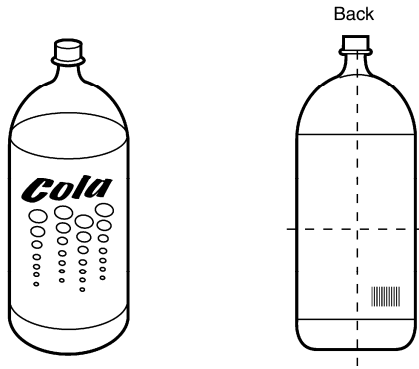


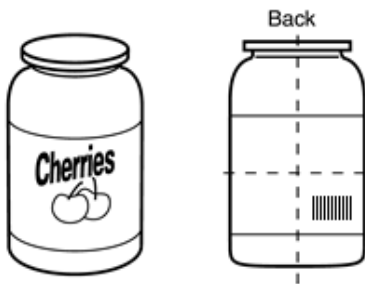
# Symbol Placement Guideline for Retail Items

Examples are provided below of the recommended symbol placement position on items.

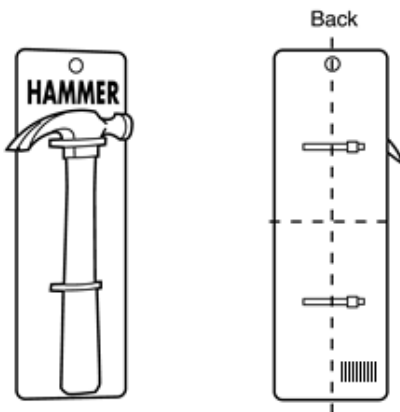
## Bottles



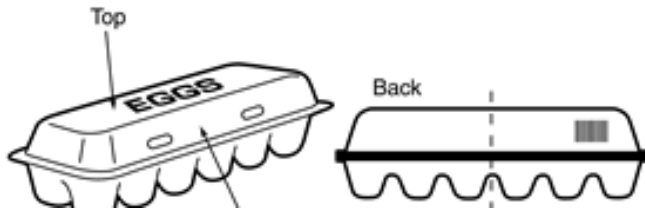
## Can, Jars



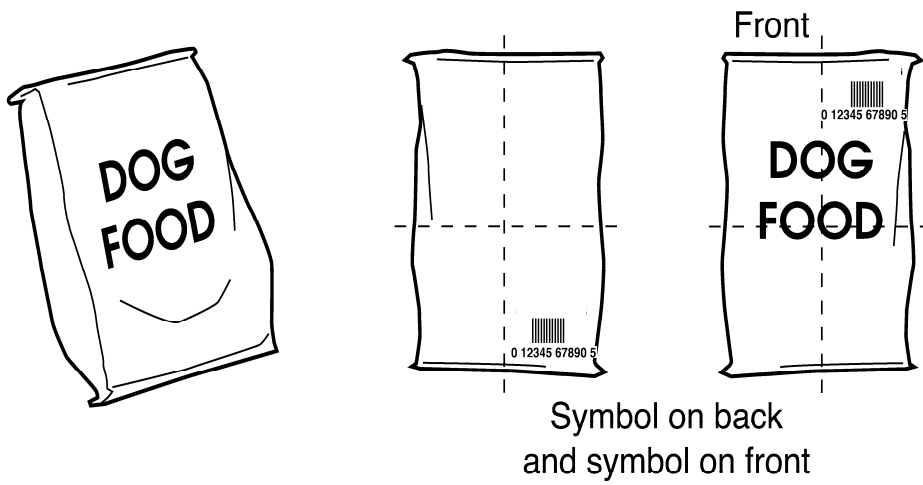
## Carded Items



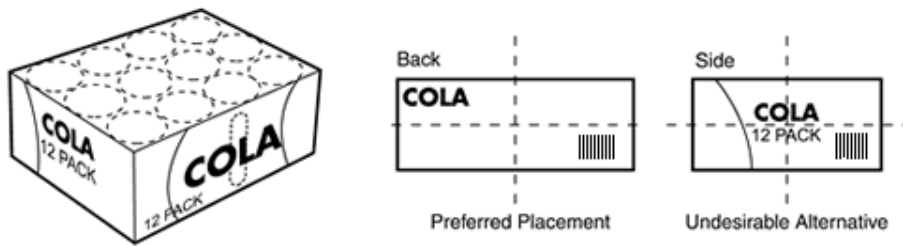
## Egg cartons



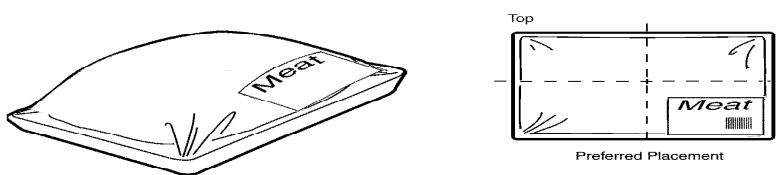
## Heavy Large, bulky items



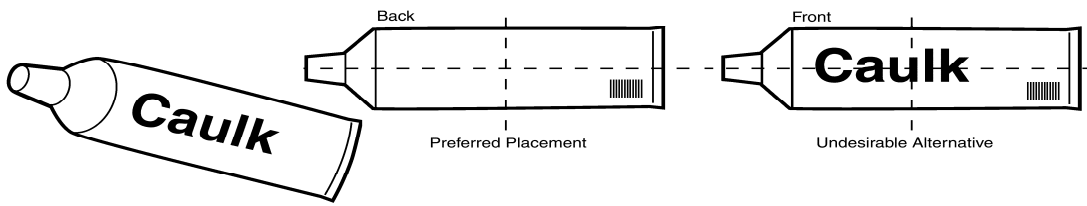
## Multi packs



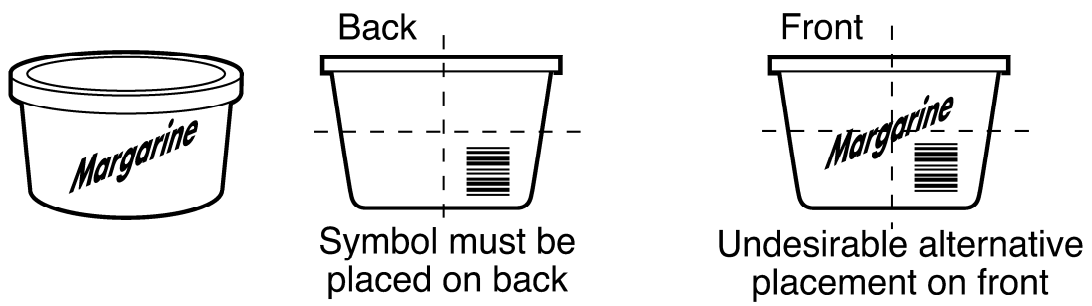
## Trays



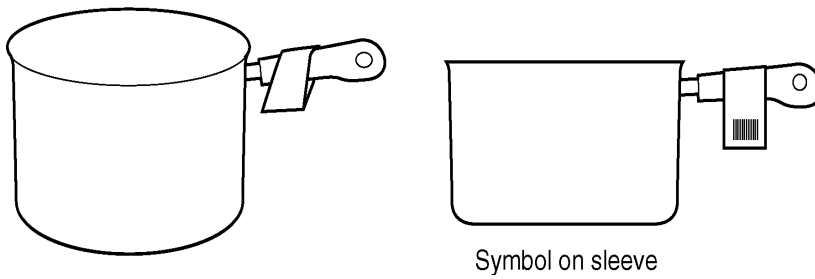
Tubes



Tubs

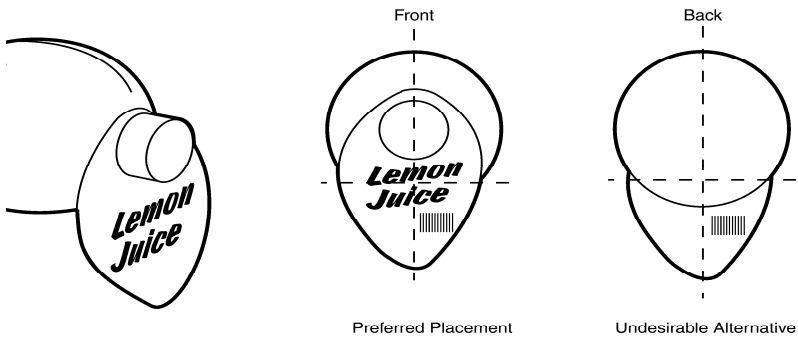


Unpackaged items

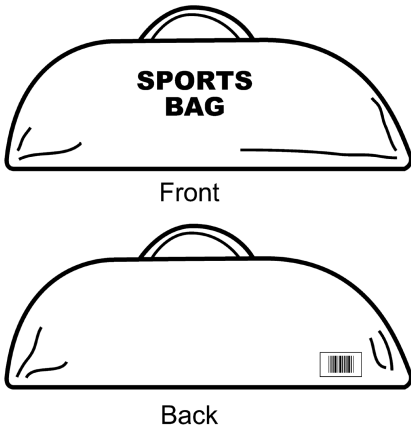


Or:

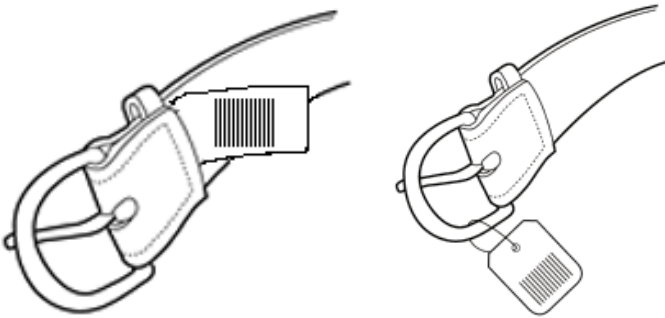




Sport bags



Recommended Symbol Placement for Clothing and Fashion Accessories

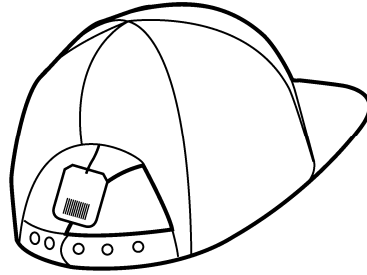
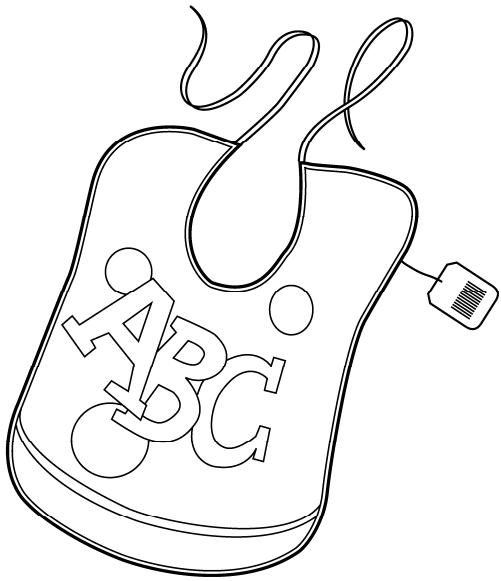


Option 1

Option 2

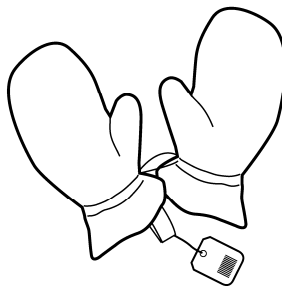
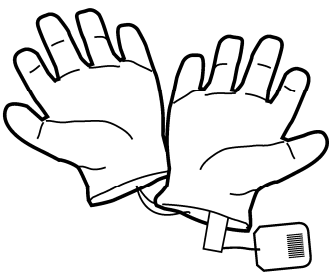
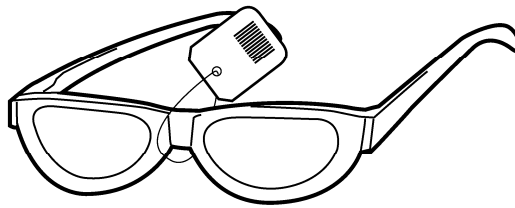
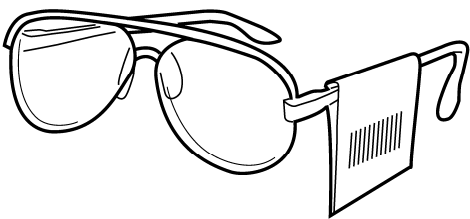
Other fashion accessories

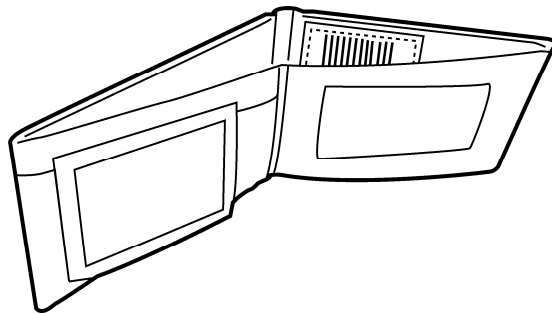
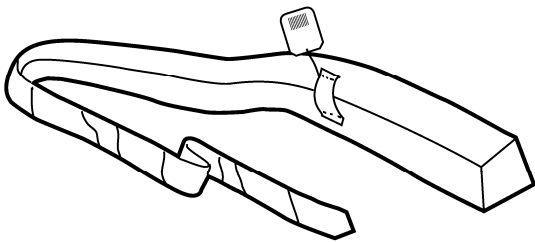
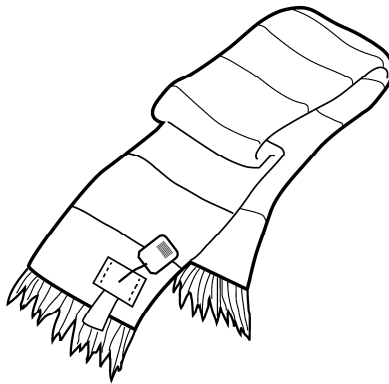
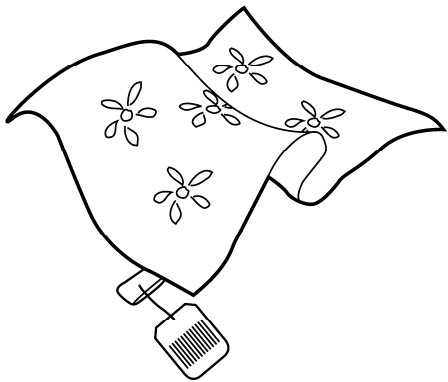
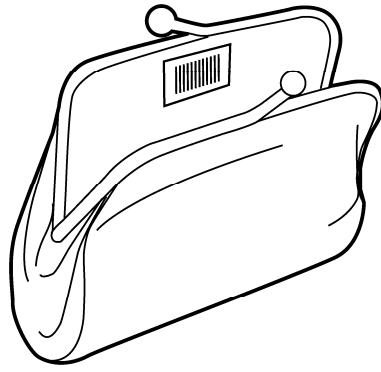
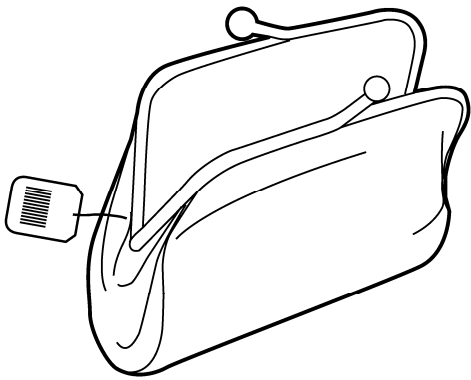


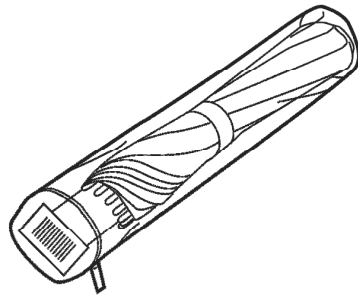
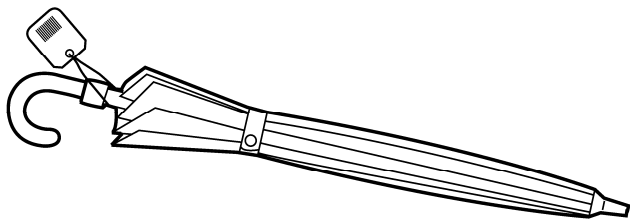
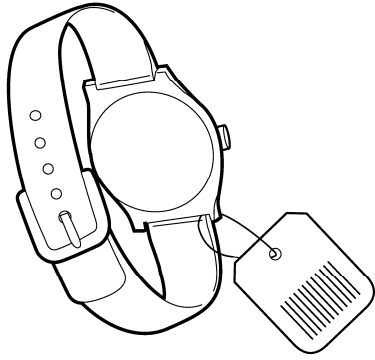


Option 1

Option 2

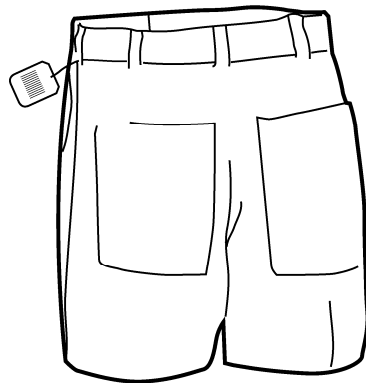
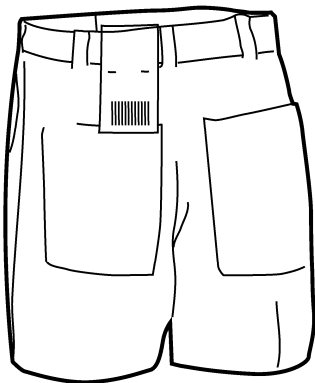






Option 1

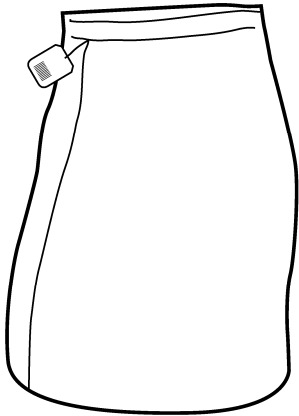
Option 2



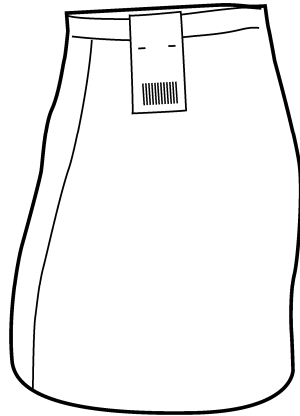
Option 1

Option 2





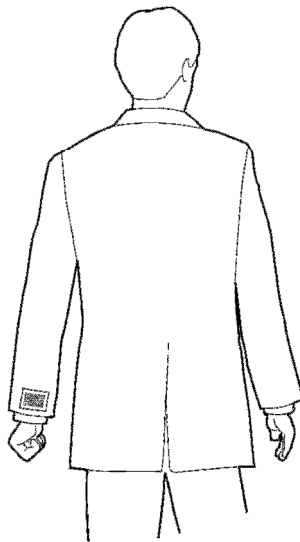
Option 1



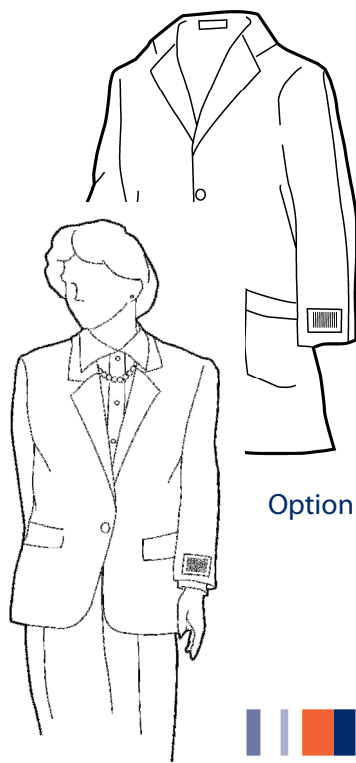
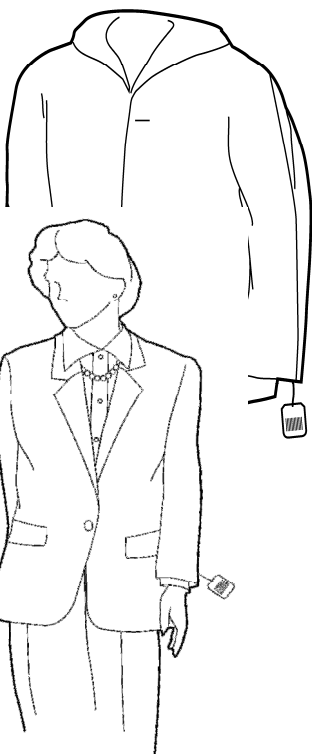
Option 2



Option 1



Option 2



Option 1

Option 2

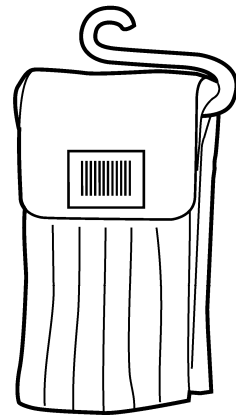
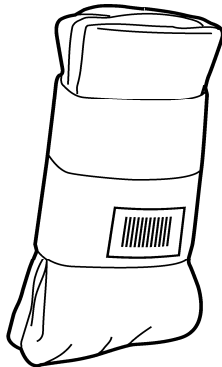
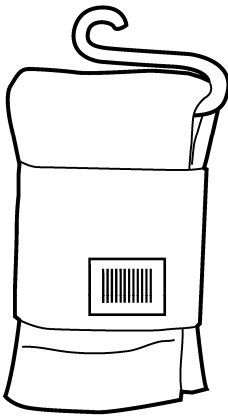


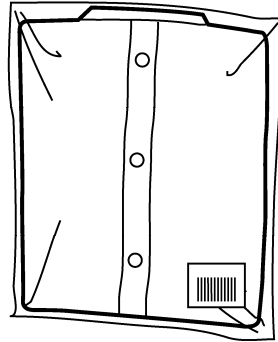
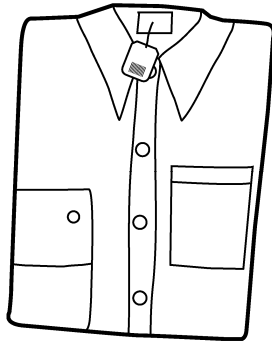
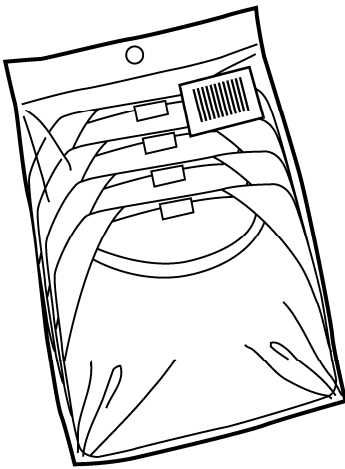
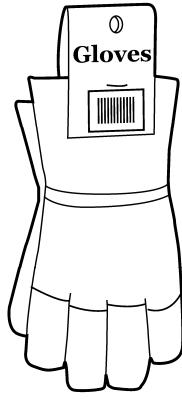
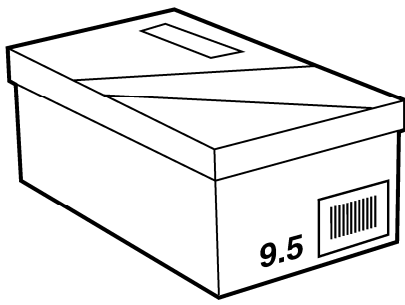


Option 1



Option 2





© Copyright GS1 2007  
[www.gs1.org](http://www.gs1.org)

